

H RANGE

Access Covers, Gratings & Surface Boxes

Hambaker

PIPELINES

BE STREETWISE ... SELECT THE 'H'



- Quality Assured ISO9001
- Access Covers & Gratings Kite Marked to EN124
- Surface Boxes Kite Marked to BS5834
- Comprehensive range, available from stock



WHY CHOOSE **H** RANGE ?

Access Covers, Gratings & Surface Boxes

Available in a wide range of sizes the H Range of access covers, gratings & surfaces boxes has been specifically designed and engineered to meet the needs of the residential and commercial sectors and is ideal for use in applications such as, driveways and pavements, estate and access roads, car parks and cul-de-sacs.

Made from durable ductile iron, the H Range offers long term performance, peace of mind and value for money and is backed by the comprehensive technical and customer service support synonymous with Hambaker Pipelines.

Combining quality and performance, access covers & gratings are fully compliant with the requirements of EN124 and surface boxes with BS5834. All of which are also third party certified by the BSI Kitemark. Products are manufactured at facilities that are governed by the requirements of ISO9001, ISO14001 and ISO18001.

Gully Gratings

Access Covers

Surface Boxes



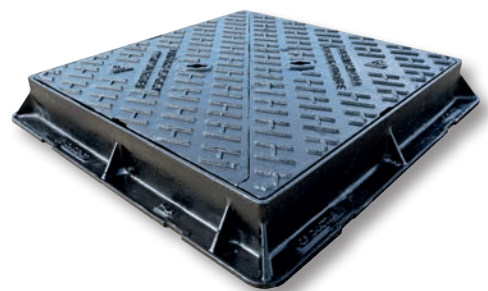
PRODUCT APPLICATION GUIDE

ACCESS COVERS

For use in Estate and B roads where all types of vehicles have access but speed is limited.

EN124 GROUP 4 : D400 ACCESS COVERS

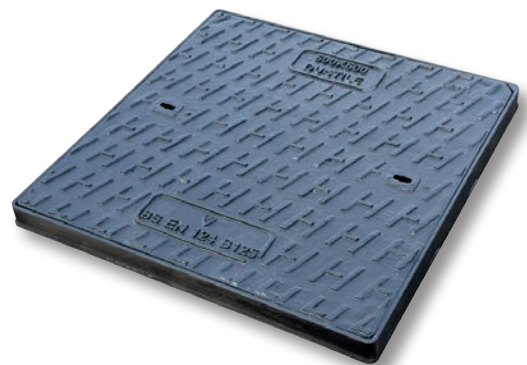
- Double triangular design
- 3 point suspension non-rock performance
- Sewers for Adoption 8 compliant
- Badged variants available



For use in car parks and pedestrian areas where occasional vehicular access is likely.

EN124 GROUP 2 : B125 ACCESS COVERS

- Single piece cover
- Single seal capable



PRODUCT APPLICATION GUIDE

GULLY GRATINGS

For use in Estate and B roads where all types of vehicles have access but speed is limited.

EN124 GROUP 4 : D400 GULLY GRATINGS - CAPTIVE HINGED

- Anti-theft captive hinge
- Single piece grating
- Non-rock performance
- Kerb and end hinged options available



For use in Estate and B roads where all types of vehicles have access but speed is limited.

EN124 GROUP 4 : D400 GULLY GRATINGS - DOUBLE TRIANGULAR

- Double triangular design
- 3 point suspension non-rock performance



For use in yard areas or Estate & B roads in locations that do not extend more than 500mm into the carriageway when measured from the kerb face.

EN124 GROUP 3 : C250 YARD GULLY GRATING - CAPTIVE HINGED



PRODUCT APPLICATION GUIDE

SURFACE BOXES

Grade A surface boxes are recommended for use in the road as they are of a heavier duty.

WARRIOR - GRADE A SURFACE BOX

Third party certified by BSI and kite marked to the requirements of BS 5834 and is also compliant with the performance requirements of BS750.



Grade B surface boxes are recommended for applications not in the road such as pavements and driveways.

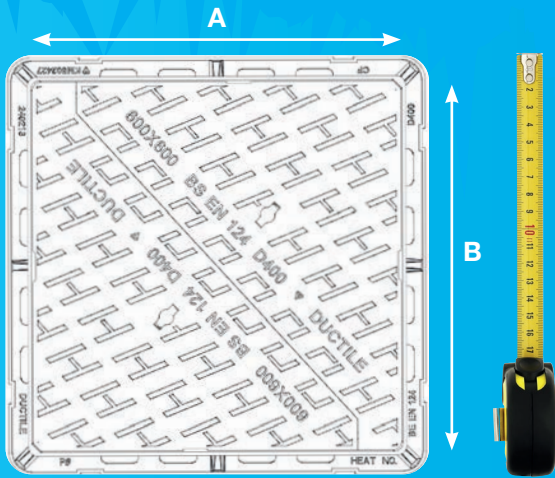
PAVEMENT GRADE B SURFACE BOXES

Third party certified by BSI and kite marked to the requirements of BS 5834.



SELECTING THE RIGHT PRODUCT

ACCESS COVERS



How to determine the size of product you need

Access covers, gully gratings and surface boxes are often specified by their clear opening size and also by their frame depth. The clear opening is a measurement taken from the inside of the frame. To determine the correct size carefully remove or open the cover or grating and measure these dimensions from front to back and from side to side.

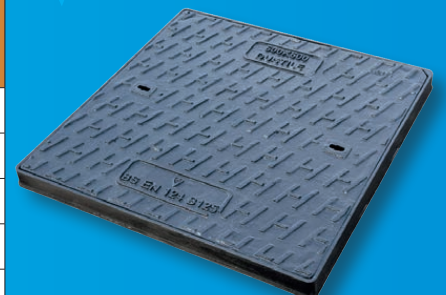
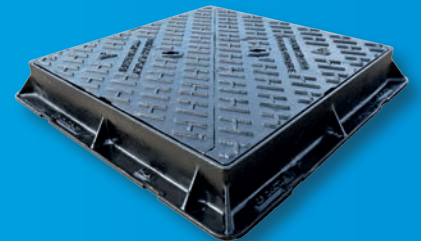
In the drawing example it indicates dimension AxB = e.g. 600mm x 600mm

The clear opening size of the frame must always be equal to or slightly greater than the size of the chamber opening it is covering to ensure the frame is adequately supported.

EN124 GROUP 4: D400 ACCESS COVERS								
Product Code	Product Code Badge Variant		EN124 Loading	Clear Opening mm	Oversize Base mm	Frame Depth mm	Nominal Mass kg	Bedding Mortar reqd. per product (Bag)
	FW	SW						
255369			D400	450 x 450	587 x 587	100	49.5	2
240213	241689	241690	D400	600 x 600	712 x 712	100	64.5	2
240214	241711	241272	D400	600 x 600	712 x 712	150	72.5	2
240216	252360	252381	D400	675 x 675	786 x 786	100	74	2
240217	252383	252384	D400	675 x 675	786 x 786	150	79.5	2
240218			D400	750 x 600	861 x 711	100	92	3
240219			D400	900 x 600	1030 x 730	100	112.5	3
240222			D400	1220 x 675	1356 x 811	100	165	4
248224			D400	1220 x 675	1356 x 811	150	183	4

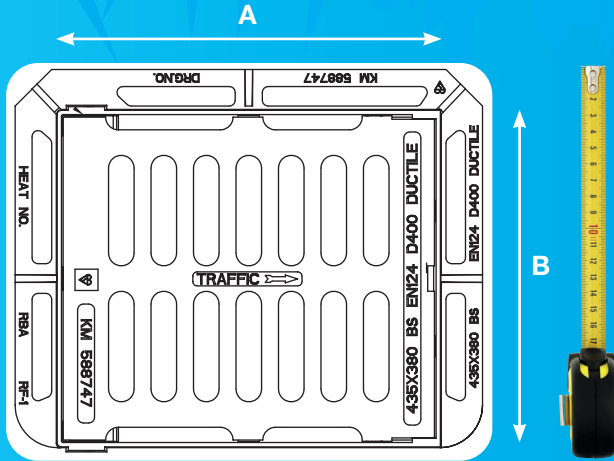
Badging Options - FW = Foul Water - SW = Surface Water

EN124 GROUP 2: B125 ACCESS COVERS						
Product Code	EN124 Loading	Clear Opening mm	Oversize Base mm	Frame Depth mm	Maximum Mass kg	Bedding Mortar reqd. per product (Bag)
240225	B125	600 x 450	692 x 542	40	30.5	2
248262	B125	600 x 450	720 x 570	75	40.2	2
240226	B125	600 x 600	690 x 690	40	42	2
248264	B125	600 x 600	715 x 715	75	42.2	2
248265	B125	750 x 600	870 x 720	75	60.1	2
248266	B125	900 x 600	1020 x 720	75	72.8	2



SELECTING THE RIGHT PRODUCT

GULLY GRATINGS



How to determine the size of product you need

Access covers, gully gratings and surface boxes are often specified by their clear opening size and also by their frame depth. The clear opening is a measurement taken from the inside of the frame. To determine the correct size carefully remove or open the cover or grating and measure these dimensions from front to back and from side to side.

In the drawing example it indicates dimension AxB = e.g. 435mm x 380mm
The clear opening size of the frame must always be equal to or slightly greater than the size of the chamber opening it is covering to ensure the frame is adequately supported.

EN124 GROUP 4: D400 GULLY GRATING – HINGED

Product Code	EN124 Loading	Hinged Opening	Clear Opening mm	Oversize Base mm	Frame Depth mm	Total Mass kg	Waterway Area cm ²	Bedding Mortar reqd. per product (Bag)
			A x B					
248223	D400	Left	435 x 380	550 x 445	100	32	626	1
253771	D400	Left	420 x 420	520 x 479	100	32	626	1
248221	D400	Right	435 x 380	550 x 445	100	32	626	1
240230	D400	Kerb	435 x 380	530 x 440	100	31.5	743	1



EN124 GROUP 4: D400 GULLY GRATING – DOUBLE TRIANGULAR

Product Code	EN124 Loading	Clear Opening mm	Oversize Base mm	Frame Depth mm	Total Mass kg	Waterway Area cm ²	Bedding Mortar reqd. per product (Bag)
		A x B					
240228	D400	435 x 380	530 x 540	100	32	743	1



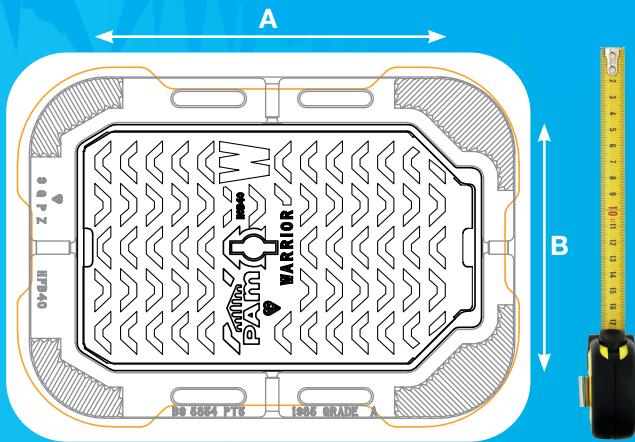
EN124 GROUP 3: C250 YARD GULLY GRATING – CAPTIVE HINGED

Product Code	Hinge Orientation	Grating Profile	EN124 Loading	Clear Opening mm	Oversize Base mm	Frame Depth mm	Nominal Mass kg	Bedding Mortar reqd. per product (Bag)
				A x B				
249764	End Hinged	Flat	C250	300 x 300	390 x 460	75	20	1
249766	End Hinged	Dished	C250	300 x 300	390 x 460	75	20	1



SELECTING THE RIGHT PRODUCT

SURFACE BOXES



How to determine the size of product you need

Access covers, gully gratings and surface boxes are often specified by their clear opening size and also by their frame depth. The clear opening is a measurement taken from the inside of the frame. To determine the correct size carefully remove or open the cover or grating and measure these dimensions from front to back and from side to side.

In the drawing example it indicates dimension AxB = e.g. 380mm x 230mm
The clear opening size of the frame must always be equal to or slightly greater than the size of the chamber opening it is covering to ensure the frame is adequately supported.

WARRIOR GRADE A SURFACE BOXES FOR USE IN CITY TRUNK ROADS CARRYING HEAVY TRAFFIC

SAP Code STD Unit	SAP Code Chained	BS5834		Clear Opening A x B (mm)	Base (mm)	Depth (mm)	Mass (kg)	Lifting Key Type	Bedding Mortar reqd. per product (Bag)
		Grade	Part						
FSWA15CK	186962	A	2	150 x 150	225 x 225	100	8.5	TEE	1
186972	186973	A	2	225 x 225	325 x 325	100	13.2	TEE	1
186980	186981	A	2	300 x 300	400 x 400	100	20	TEE	1
186935	186936	A	3	380 x 230	530 x 380	125	29.4	LOOP	1



Badging Options - FH = Fire Hydrant - SV = Sluice Valve - WO = Wash Out - AV = Air Valve

PAVEMENT GRADE B SURFACE BOXES

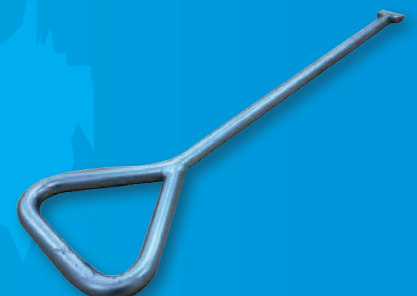
SAP Code	Clear Opening A x B ØA (mm)	Spigot Outlet I/D (mm)	Overbase Size ØC (mm)	Depth (mm)	Total Mass (kg)	Bedding Mortar reqd. per product (Bag)
187022	135 x 135*	N/A	Ø210	75	4.2	1
187028* #	Ø180	Ø202	240 x 240	110	8.5	1
187029	Ø180	Ø202	240 x 240	110	8.5	1
187032	Ø180	N/A	275 x 75	60	7.6	1
205341*	205 x 205	N/A	260 x 260	75	8.1	1
256797	Ø145	Ø179	201 x 201	90	5.7	1



Badging Option - WATER

LOCKING & LIFTING KEYS

SAP Code	Description	Length (mm)	Surface Finish	Internal Ref.	For use with
C51	Light duty Tee handled lifting key	127	Self Colour	RMA 63	B125 Access Covers Grade A Surface Boxes
C50	Heavy duty loop handled lifting key	168	Self Colour	RMA 62	D400 Access Covers Larger Grade A Surface Boxes Large Gully Gratings
190667	Heavy duty loop handled lifting key	460	Galvanised	RMA 56	
190668	Heavy duty loop handled lifting key	610	Galvanised	RMA 57	



BEDDING MORTAR AND INSTALLATION GUIDE

CHOOSING BEDDING MORTAR

To get the best performance from our access covers, gratings and surface boxes we recommend using the appropriate materials to install them, in particular a bedding mortar that has been specifically developed for this purpose. A suitable mortar should ideally be non-shrink, be rapid set and have a quick strength gain. We strongly advise against using standard concretes or sand and cement mortars for this purpose.



INSTALLATION IN DETAIL

A MIX MATERIAL

Should be mixed and placed in accordance with the manufacturers' guidelines.

B BEDDING LAYER

Place layer of bedding mortar on brickwork approximately 25mm to 40mm in depth. Ensure that enough coverage is available to make contact with the entire flange of the casting.

C SEAT CASTING

Position casting frame over the manhole chamber and tamp down to ensure that the mortar keys into the casting.

D LEVEL CASTING

Ensure that the casting is level with the road surface by placing a straight edge across the corners of the casting onto the road. Frame can be made level by tamping the frame into the bedding material.

E CHECK GAPS UNDER FLANGE

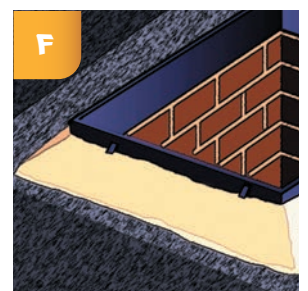
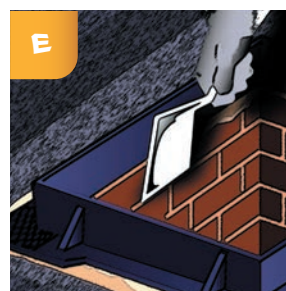
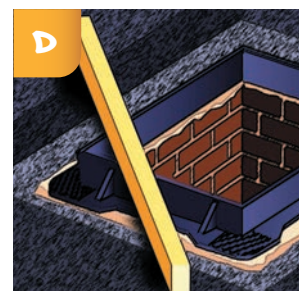
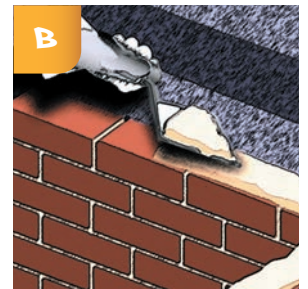
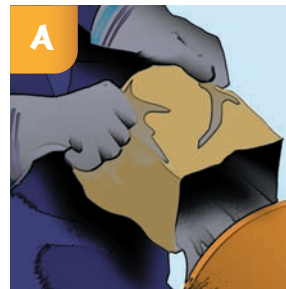
Ensure that there are no visible gaps under the flange and smooth bedding material with trowel both inside and outside of chamber.

F ENVELOPE FLANGE

Use the remaining mortar to envelope the flange paying particular attention to the corner areas. Smooth out the mortar with a trowel to ensure good bonding with the casting and to avoid any initial cracks in the bedding material.

G BACKFILL

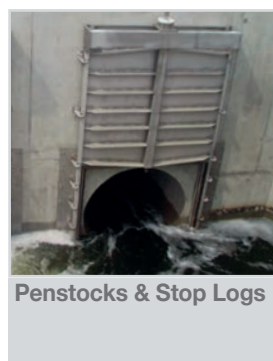
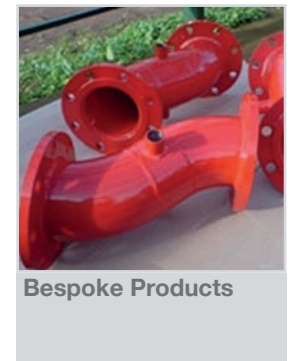
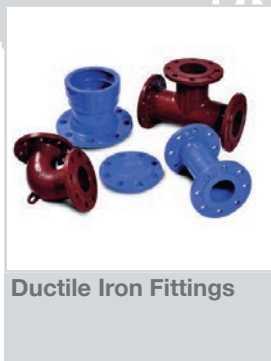
Check that the bedding material has hardened and backfill with asphalt. Ensure that the asphalt is properly compacted.



INNOVATIVE, SAFE, SECURE AND DURABLE SOLUTIONS

- Quality Assured ISO9001
- Well Established Company
- Durable Materials and Composition
- Ductile Advantage
- Product Data Sheets
- Access Covers & Gratings Kite Marked to EN124
- Easy Ordering & Fast Delivery
- Surface Boxes Kite Marked to BS5834
- Comprehensive range
- All products held in stock

OTHER PRODUCTS AVAILABLE INCLUDE:



For more details of the comprehensive range of products available, please go to www.hambakerpipelines.co.uk or Tel. 0161 231 9090